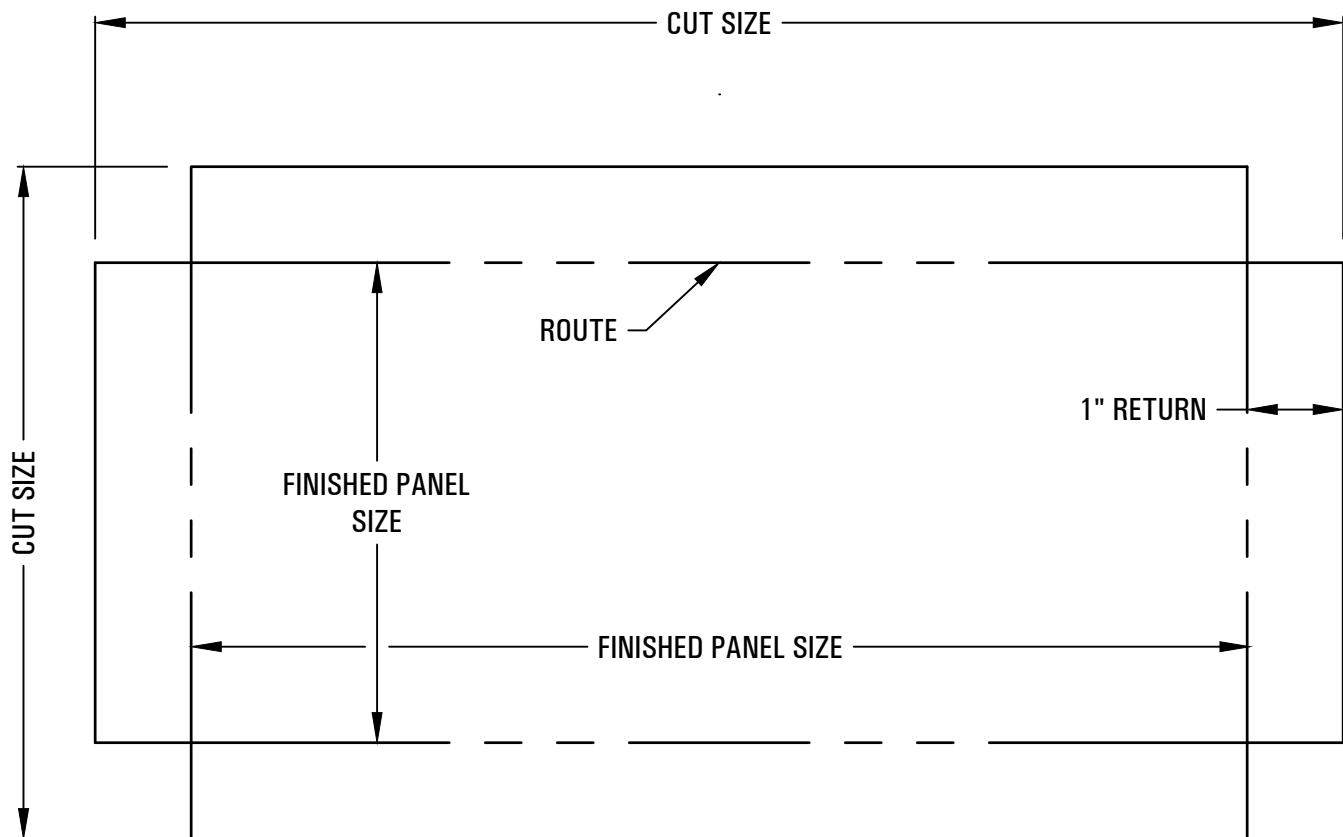
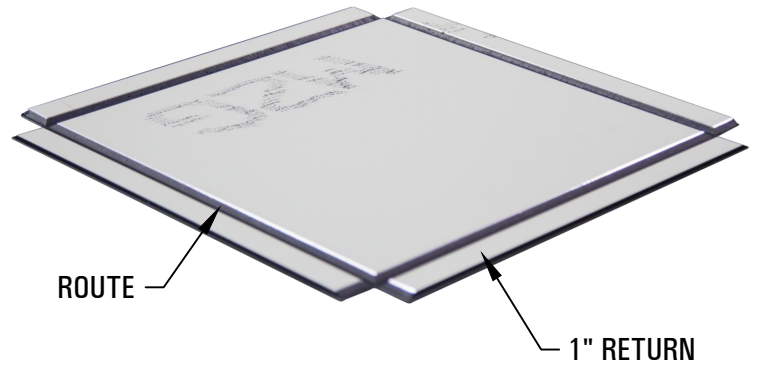
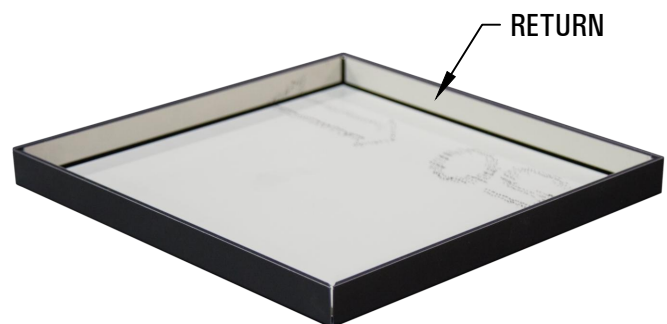


UNIVERSAL COMPOSITE PANEL SYSTEMS

1. USING UCPS AND MANUFACTURES RECOMMENDATIONS, ROUTE THE ACM PANEL, ALLOWING FOR 1" RETURNS. SEE BELOW FOR A TYPICAL FLATTENED LAYOUT



2. USE A BRAKE OR JIG TO FOLD EACH RETURN UP/DOWN.



FABRICATION INSTRUCTIONS



DRAWING REVISIONS

REV. #	DESCRIPTION

DRAWN BY: RJH
 CHECKED BY:
 DATE: 1/31/17
 SCALE: 1:1
 MATERIAL(S): N/A

DETAIL

1

UNIVERSAL COMPOSITE PANEL SYSTEMS

4. CUT EXTRUSIONS TO SIZE
(FINISH PANEL SIZE - 1.75")
5. CONFIGURE AND DRILL 13/64"Ø WEEP HOLES
STARTING NO MORE THAN 4" FROM EACH END OF THE
PANEL, AND NO MORE THAN 20" O.C. IN-BETWEEN THE
FIRST (2) WEEPS, ON ALL TOP AND BOTTOM
PERIMETER EXTRUSIONS OF A PANEL.
**THIS STEP DOES NOT APPLY TO WETSEAL
INSTALLATIONS.**

6. APPLY CAULK TO THE GROOVED SURFACES OF
PERIMETER EXTRUSIONS, CENTER ALONG THE BACK
SIDE OF THE 1" RETURN, AND CLAMP IN PLACE.
7. FASTEN THE EXTRUSION TO THE PANEL. FASTENERS
SHOULD START NO MORE THAN 2" FROM EACH END
OF THE PANEL, AND NO MORE THAN 16" O.C.
IN-BETWEEN THE FIRST (2) FASTENERS. REPEAT
STEPS 5-7 FOR EACH REMAINING SIDE.
**USE RIVETS FOR RAINSCREEN AND CLOSED CELL
BACKER-ROD WETSEAL INSTALLATIONS, AND USE A
13/64" DRILL BIT TO PRE-DRILL EACH RIVET HOLE PER
THE SPACING REQUIREMENTS MENTIONED ABOVE.**

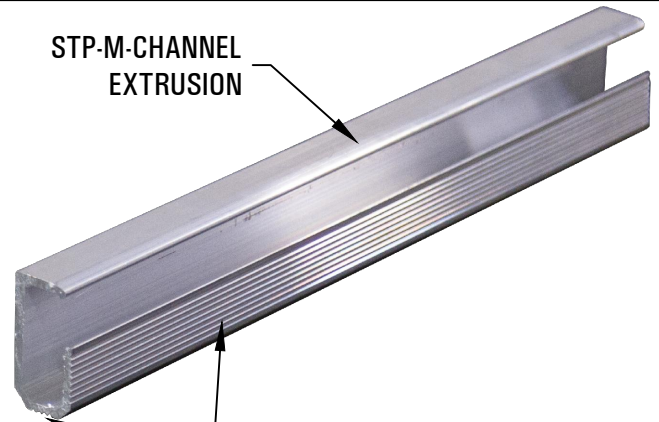
**USE MECHANICAL FASTENERS FOR ANY OPEN CELL
BACKER-ROD WETSEAL INSTALLATIONS, PER THE
SPACING REQUIREMENTS MENTIONED ABOVE.**

8. APPLY CAULK TO THE INSIDE VERTICAL CORNERS
WHERE (2) EXTRUSIONS MEET. MAKE SURE TO CAULK
FROM THE BACK-FACE OF THE PANEL TO THE BOTTOM
FACE OF THE PERIMETER EXTRUSION.
**THIS STEP DOES NOT APPLY TO WETSEAL
INSTALLATIONS.**

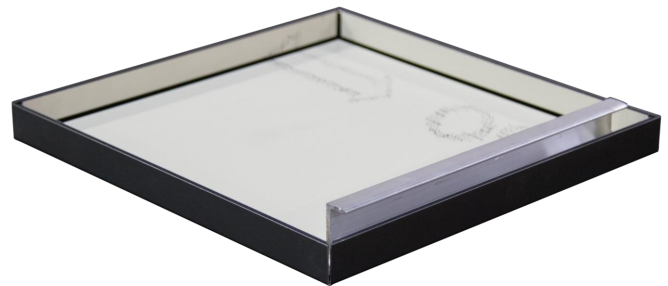
9. PLACE A CORNER BRACKET AT EVERY INSIDE CORNER
SO THAT IT REST SLIGHTLY ABOVE THE BACK FACE OF
THE PANEL, AND SECURE WITH (2) FASTENERS.

**USE A CORNER BRACKET AS A SPACER TO EASILY
PLACE THE BRACKET SLIGHTLY ABOVE THE BACK FACE
OF THE PANEL.**

STP-M-CHANNEL
EXTRUSION



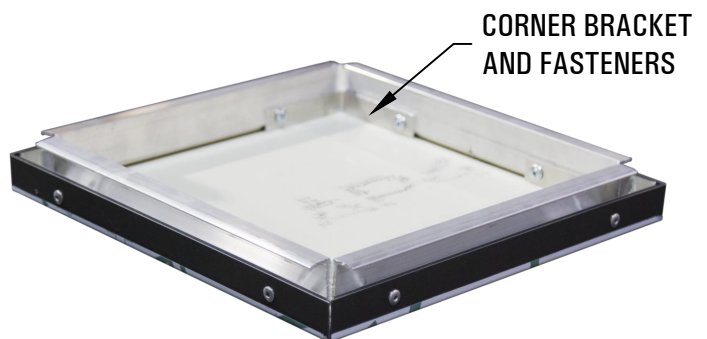
GROOVED SURFACES TO CAULK



CAULKED JOINT



RIVET



CORNER BRACKET
AND FASTENERS

FABRICATION INSTRUCTIONS



DRAWING REVISIONS

REV. #	DESCRIPTION

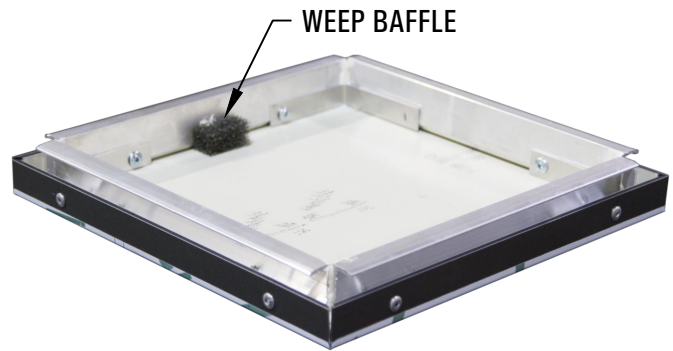
DRAWN BY: RJH
CHECKED BY:
DATE: 1/31/17
SCALE: 1:1
MATERIAL(S): N/A

DETAIL

2

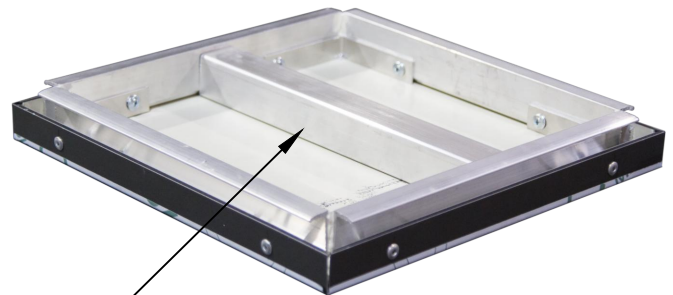
UNIVERSAL COMPOSITE PANEL SYSTEMS

10. CAULK A BAFFLE IN PLACE AT EACH WEEP LOCATION ON TOP PERIMETER EXTRUSIONS, ONLY.



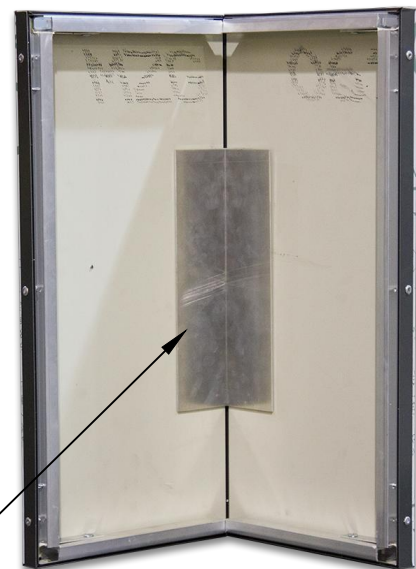
11. IF REQUIRED, TAPE AND CAULK A STIFFENER IN PLACE PER A STRUCTURAL ENGINEER'S RECOMMENDATIONS. **MAKE SURE TO USE A VHB DOUBLE-SIDED TAPE FOR ALL STIFFENER INSTALLATIONS.**

KEEP STIFFENERS A MINIMUM OF 6" O.C. AWAY FROM THE INTERNAL WEEP PATHS.



1.25" x 1.25" STIFFENER

12. IF REQUIRED, ATTACH A REINFORCING CORNER ANGLE, CENTERED ON PANELS 36" - 72", WITH VHB DOUBLE-SIDED TAPE AND CAULK. FOR PANELS LARGER THAN 72" EQUALLY SPACE REINFORCING CORNER ANGLES NO MORE THAN 36" O.C.



REINFORCING CORNER ANGLE

FABRICATION INSTRUCTIONS



DRAWING REVISIONS

REV. #	DESCRIPTION

DRAWN BY: RJH
CHECKED BY:
DATE: 1/31/17
SCALE: 1:1
MATERIAL(S): N/A

DETAIL

3