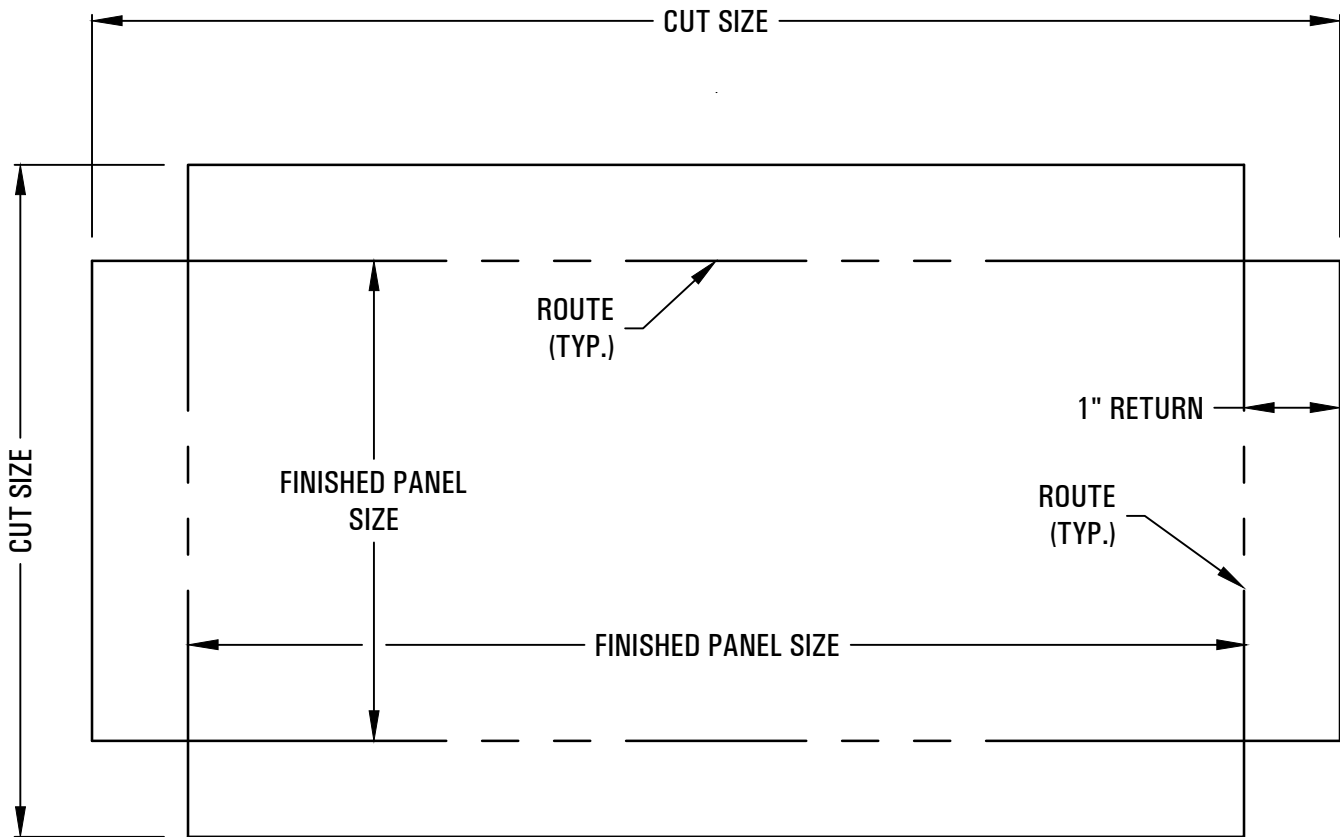
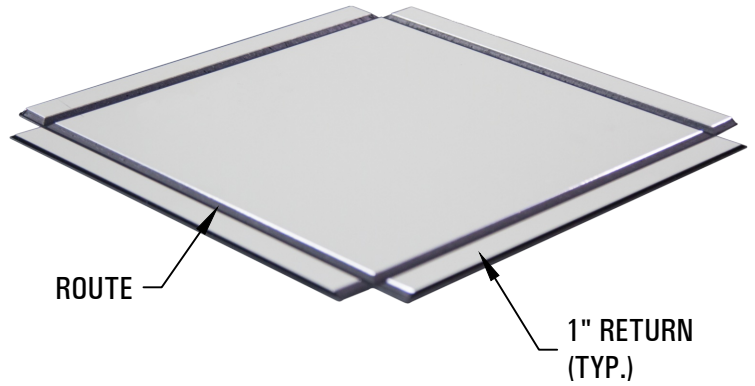
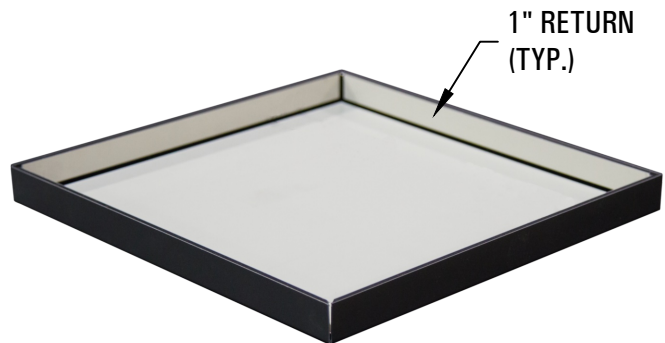


UNIVERSAL COMPOSITE PANEL SYSTEMS

1. USING UCPS AND THE ACM MANUFACTURER'S RECOMMENDATIONS, ROUTE THE ACM PANEL, ALLOWING FOR 1" RETURNS, PERFORMED OVER A WORKSPACE THAT WILL PROPERLY PROTECT THE PANEL'S FINISH SURFACE. SEE BELOW FOR A TYPICAL FLATTENED LAYOUT.



2. USE YOUR CUSTOM PANEL FOLDING TOOL WITH PROPER PROTECTION TO THE FINISH SIDE OF THE PANEL, TO FOLD EACH RETURN APPROPRIATELY.



UCPS 1000 RAINSCREEN (RS) PANEL FABRICATION DETAILS / INSTRUCTIONS



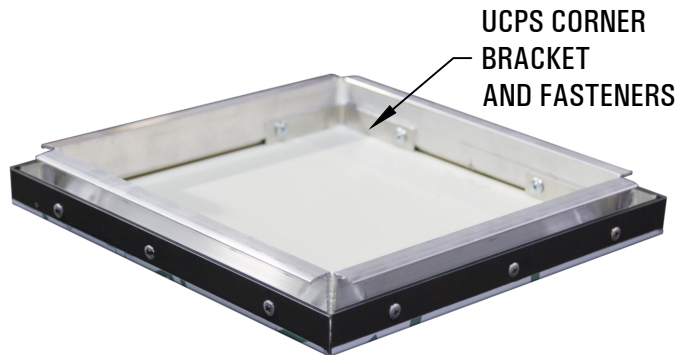
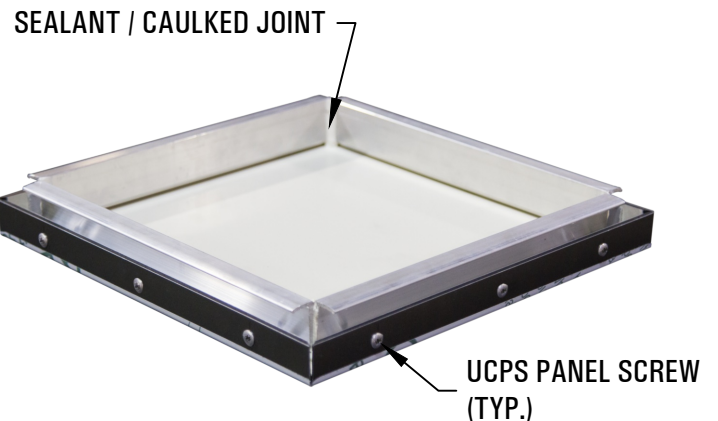
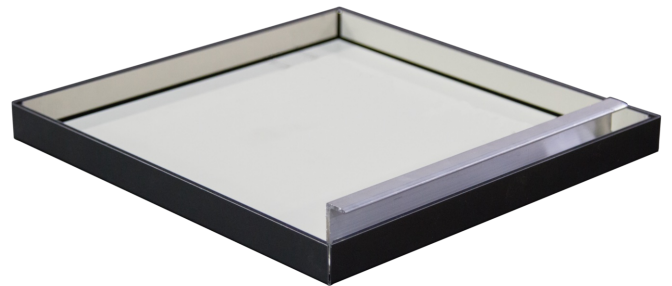
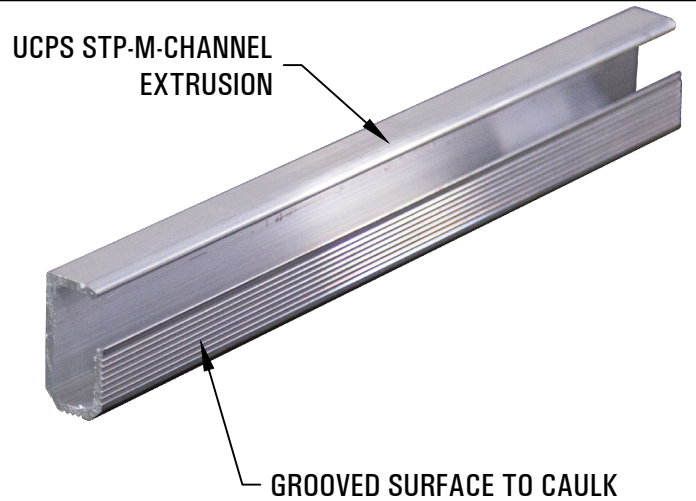
DRAWING REVISIONS	
REV. #	DESCRIPTION
001	APPROVED FOR TRAINING 3/17/25

DRAWN BY:	RJH
CHECKED BY:	
DATE:	3/17/25
SCALE:	N.T.S.
MATERIAL(S):	ACM

DETAIL	1

UNIVERSAL COMPOSITE PANEL SYSTEMS

3. CUT UCPS STP-M-CHANNEL EXTRUSIONS TO SIZE (FINISH PANEL SIZE: LESS 1.75" OVERALL FOR EACH EXTRUSION)
4. CONFIGURE AND DRILL 13/64"Ø WEEP HOLES STARTING 4" FROM EACH END OF THE PANEL, AND NO MORE THAN 20" O.C. IN-BETWEEN THE FIRST (2) WEEPS, ON ALL TOP AND BOTTOM PERIMETER UCPS STP-M-CHANNEL EXTRUSIONS OF EACH PANEL.
NOTE: THIS STEP DOES NOT APPLY TO WET SEAL (WS) SYSTEM INSTALLATIONS.
5. APPLY A COMPATIBLE / SUITABLE SEALANT / CAULK TO THE GROOVED SURFACE ALONG THE ROUTE & RETURN LEG OF THE PERIMETER UCPS STP-M-CHANNEL EXTRUSION, CENTER ALONG THE BACK SIDE OF THE 1" RETURN, AND APPROPRIATELY CLAMP IN PLACE WHILE PROTECTING THE FINISH SIDE OF THE PANEL.
6. FASTEN THE UCPS STP-M-CHANNEL EXTRUSION TO THE PANEL. UCPS PANEL SCREWS SHOULD START NO MORE THAN 2" FROM EACH END OF THE PANEL, AND NO MORE THAN 16" O.C. IN-BETWEEN THE FIRST (2) UCPS PANEL SCREWS. REPEAT STEPS 5-7 FOR EACH REMAINING SIDES.
7. APPLY A COMPATIBLE / SUITABLE SEALANT / CAULK TO THE INSIDE VERTICAL CORNERS WHERE (2) UCPS STP-M-CHANNEL EXTRUSIONS MEET. MAKE SURE TO SEAL FROM THE BACK-FACE OF THE PANEL TO THE BOTTOM FACE OF THE PERIMETER UCPS STP-M-CHANNEL EXTRUSION.
NOTE: THIS STEP DOES NOT APPLY TO WET SEAL (WS) SYSTEM INSTALLATIONS.
8. PLACE A UCPS CORNER BRACKET AT EVERY INSIDE CORNER SO THAT IT RESTS SLIGHTLY ABOVE THE BACK FACE OF THE PANEL, AND SECURE WITH (2) FASTENERS. USE A UCPS CORNER BRACKET AS A SPACER TO EASILY PLACE THE BRACKET SLIGHTLY ABOVE THE BACK FACE OF THE PANEL.



UCPS 1000 RAINSCREEN (RS) PANEL FABRICATION DETAILS / INSTRUCTIONS



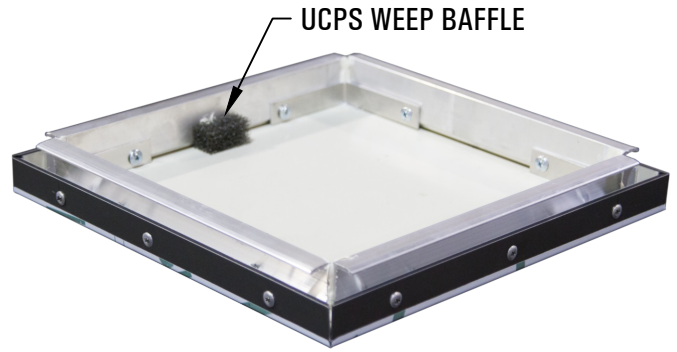
DRAWING REVISIONS	
REV. #	DESCRIPTION
001	APPROVED FOR TRAINING 3/17/25

DRAWN BY:	RJH
CHECKED BY:	
DATE:	3/17/25
SCALE:	N.T.S.
MATERIAL(S):	UCPS & ACM

DETAIL
2

UNIVERSAL COMPOSITE PANEL SYSTEMS

9. USE COMPATIBLE / SUITABLE SEALANT / CAULK TO INSTALL A UCPS BAFFLE IN PLACE AT EACH WEEP LOCATION ON THE TOP PERIMETER UCPS EXTRUSIONS, ONLY.

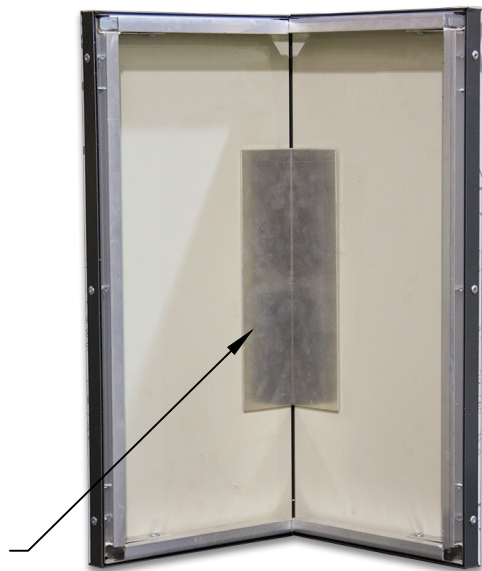


10. IF REQUIRED, TAPE AND USE COMPATIBLE / SUITABLE SEALANT / CAULK TO INSTALL A UCPS I-BEAM STIFFENER IN PLACE PER A STRUCTURAL ENGINEER'S RECOMMENDATIONS. MAKE SURE TO USE A VHB DOUBLE-SIDED TAPE FOR ALL UCPS I-BEAM STIFFENER INSTALLATIONS. KEEP UCPS I-BEAM STIFFENERS A MINIMUM OF 6" O.C. AWAY FROM THE INTERNAL WEEP PATHS.



11. IF REQUIRED, ATTACH A REINFORCING UCPS CORNER ANGLE, CENTERED ON PANELS 36" - 72", WITH VHB DOUBLE-SIDED TAPE AND COMPATIBLE / SUITABLE SEALANT / CAULK. FOR PANELS LARGER THAN 72" EQUALLY SPACE REINFORCING UCPS CORNER ANGLES NO MORE THAN 36" O.C.

UCPS I-BEAM STIFFENER



IF REQUIRED, ATTACH THE REINFORCING UCPS CORNER ANGLE WITH VHB DOUBLE SIDED AND COMPATIBLE / SUITABLE SEALANT / CAULK, TYPICAL.

UCPS 1000 RAINSCREEN (RS) PANEL FABRICATION DETAILS / INSTRUCTIONS



DRAWING REVISIONS

REV. #	DESCRIPTION
001	APPROVED FOR TRAINING 3/17/24

DRAWN BY:	RJH
CHECKED BY:	
DATE:	3/17/25
SCALE:	N.T.S.
MATERIAL(S):	UCPS & ACM

DETAIL

3