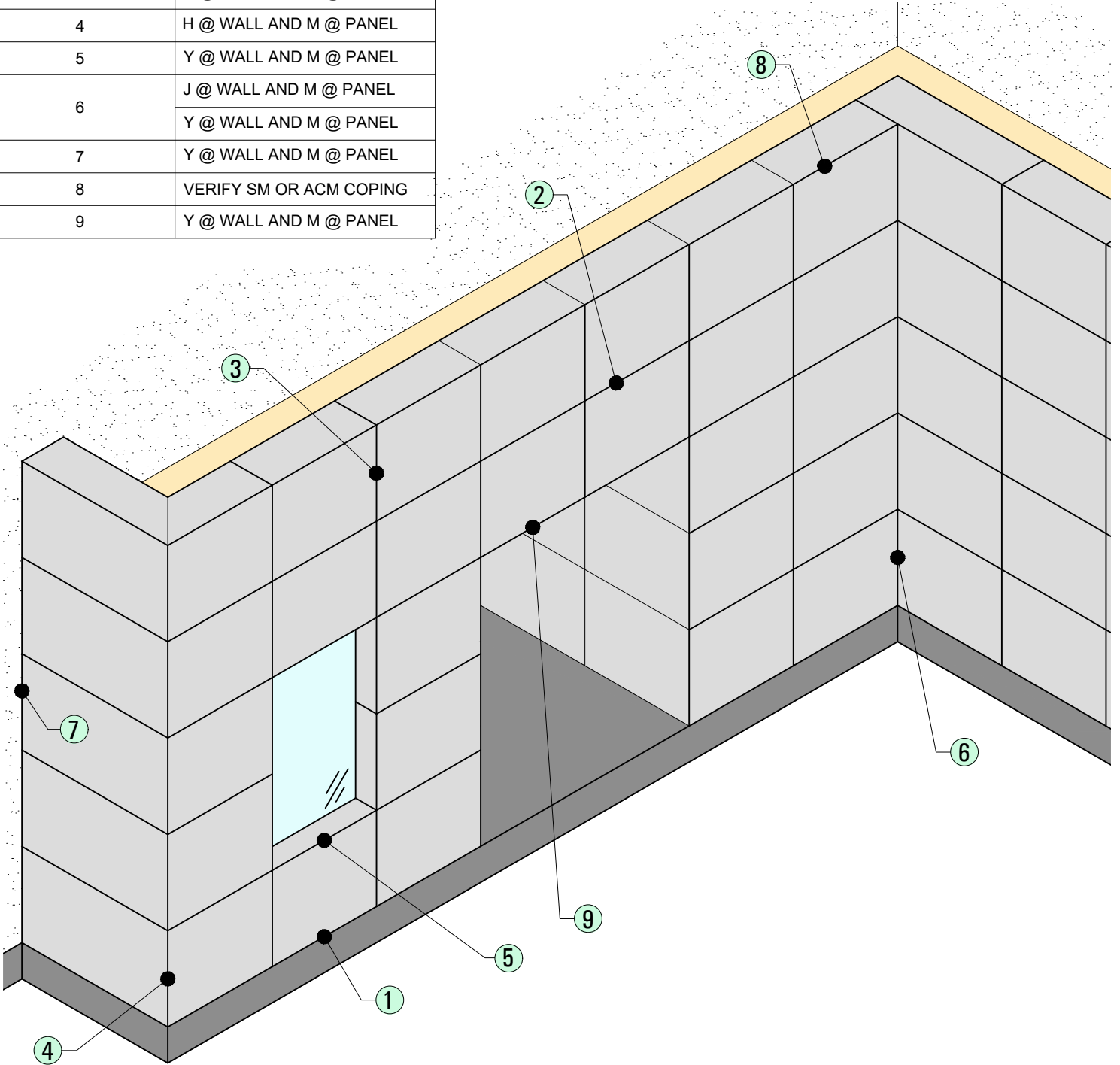


UNIVERSAL COMPOSITE PANEL SYSTEMS

DETAIL QUICK REFERENCE

DETAIL No.	DESCRIPTION
1	J @ WALL AND M @ PANEL
2	H @ WALL AND M @ PANEL
3	H @ WALL AND M @ PANEL
4	H @ WALL AND M @ PANEL
5	Y @ WALL AND M @ PANEL
6	J @ WALL AND M @ PANEL
	Y @ WALL AND M @ PANEL
7	Y @ WALL AND M @ PANEL
8	VERIFY SM OR ACM COPING
9	Y @ WALL AND M @ PANEL



UCPS SERIES 1000 RAINSCREEN (RS) INSTALLATION DETAILS



DRAWING REVISIONS

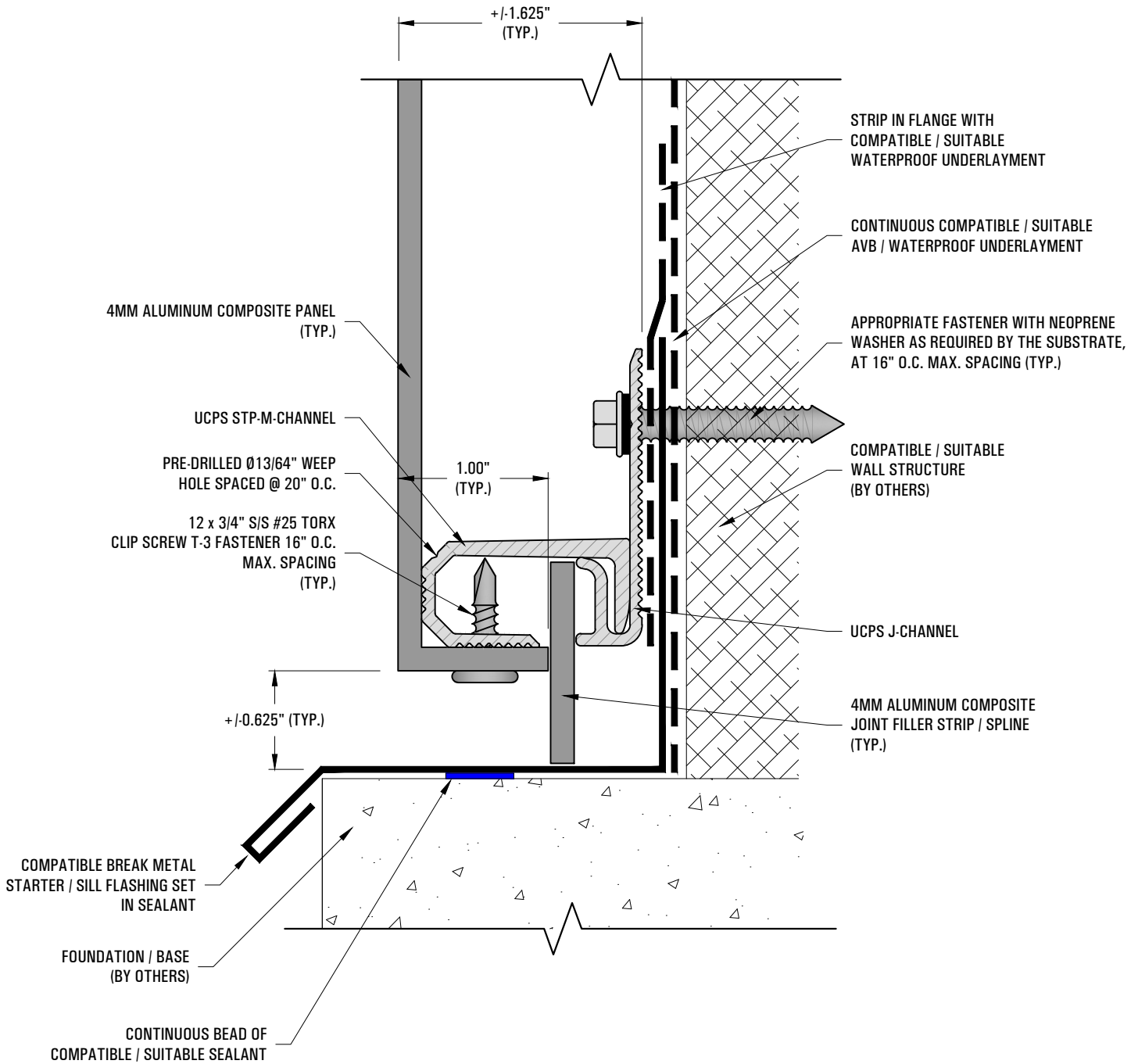
REV. #	DESCRIPTION
001	APPROVED FOR TRAINING 3/17/25

DRAWN BY:	RJH
CHECKED BY:	
DATE:	3/17/25
SCALE:	N.T.S.
MATERIAL(S):	N/A

DETAIL

C

UCPS SERIES 1000 RAINSCREEN (RS)



NOTES:

1. USE SHIMS (NOT SHOWN) AS REQUIRED SO THAT EACH PANEL LIES LEVEL AND PLUMB.

STARTER / SILL FLASHING ABOVE FOUNDATION DETAIL

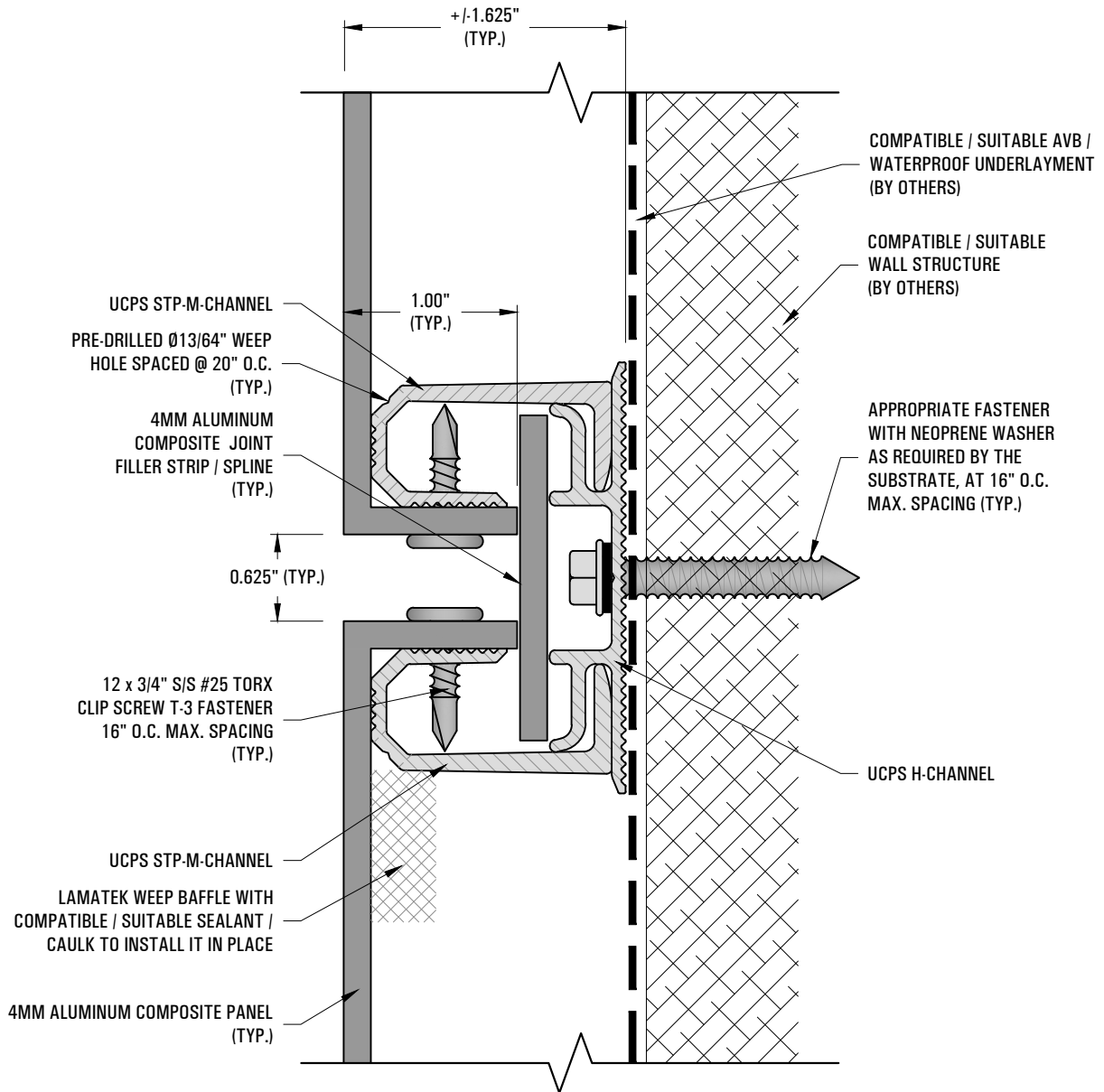


DRAWING REVISIONS	
REV. #	DESCRIPTION
001	APPROVED FOR TRAINING 3/17/25

DRAWN BY:	RJH
CHECKED BY:	
DATE:	3/17/25
SCALE:	N.T.S.
MATERIAL(S):	UCPS & ACM

DETAIL	1

UCPS SERIES 1000 RAINSCREEN (RS)



NOTES:

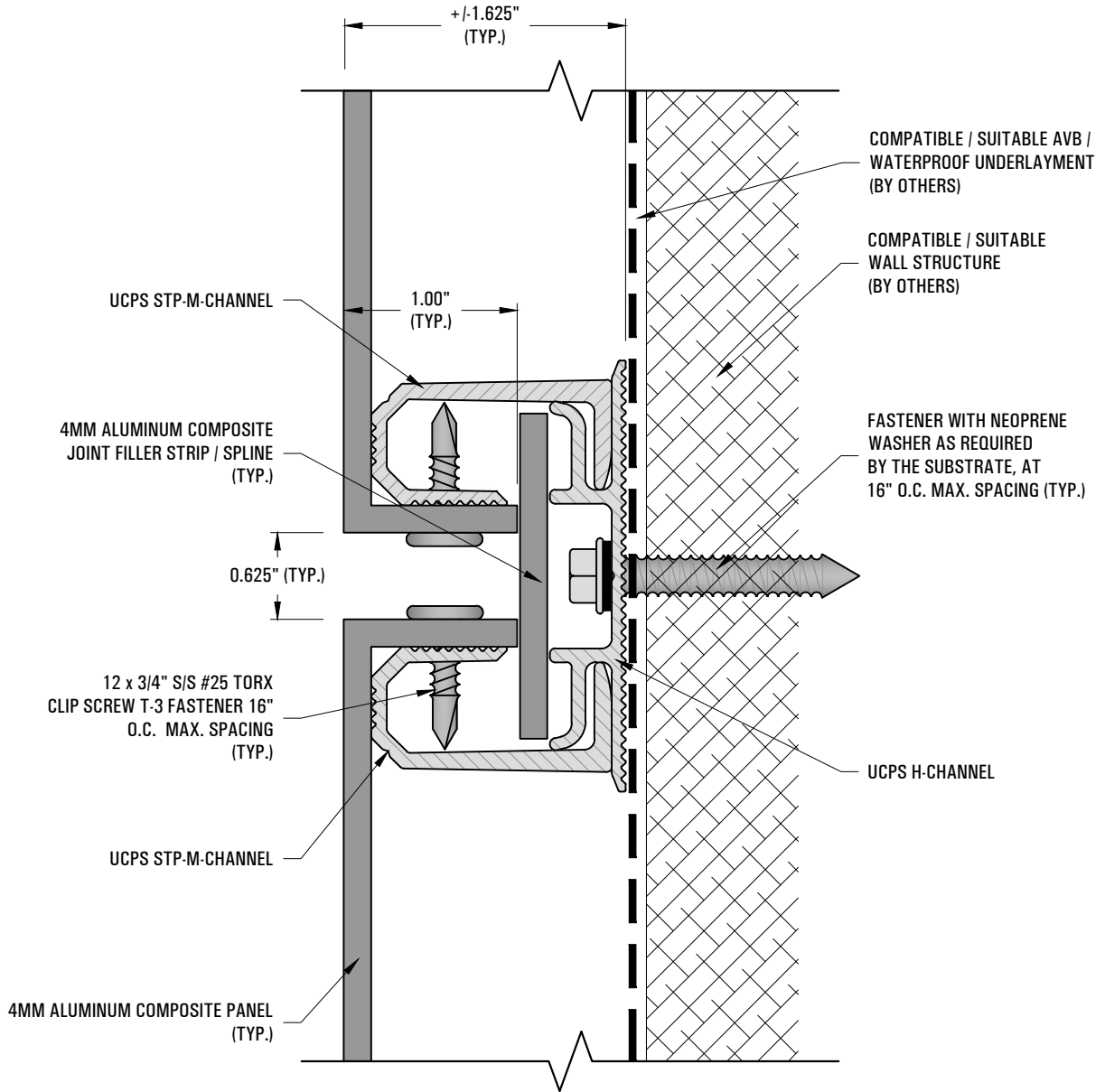
1. USE SHIMS (NOT SHOWN) AS REQUIRED SO THAT EACH PANEL LIES LEVEL AND PLUMB.

TYPICAL HORIZONTAL JOINT DETAIL



DRAWING REVISIONS		DRAWN BY:	RJH	DETAIL
REV. #	DESCRIPTION	CHECKED BY:		2
001	APPROVED FOR TRAINING 3/17/25	DATE:	3/17/25	
		SCALE:	N.T.S.	
		MATERIAL(S):	UCPS & ACM	

UCPS SERIES 1000 RAINSCREEN (RS)



NOTES:

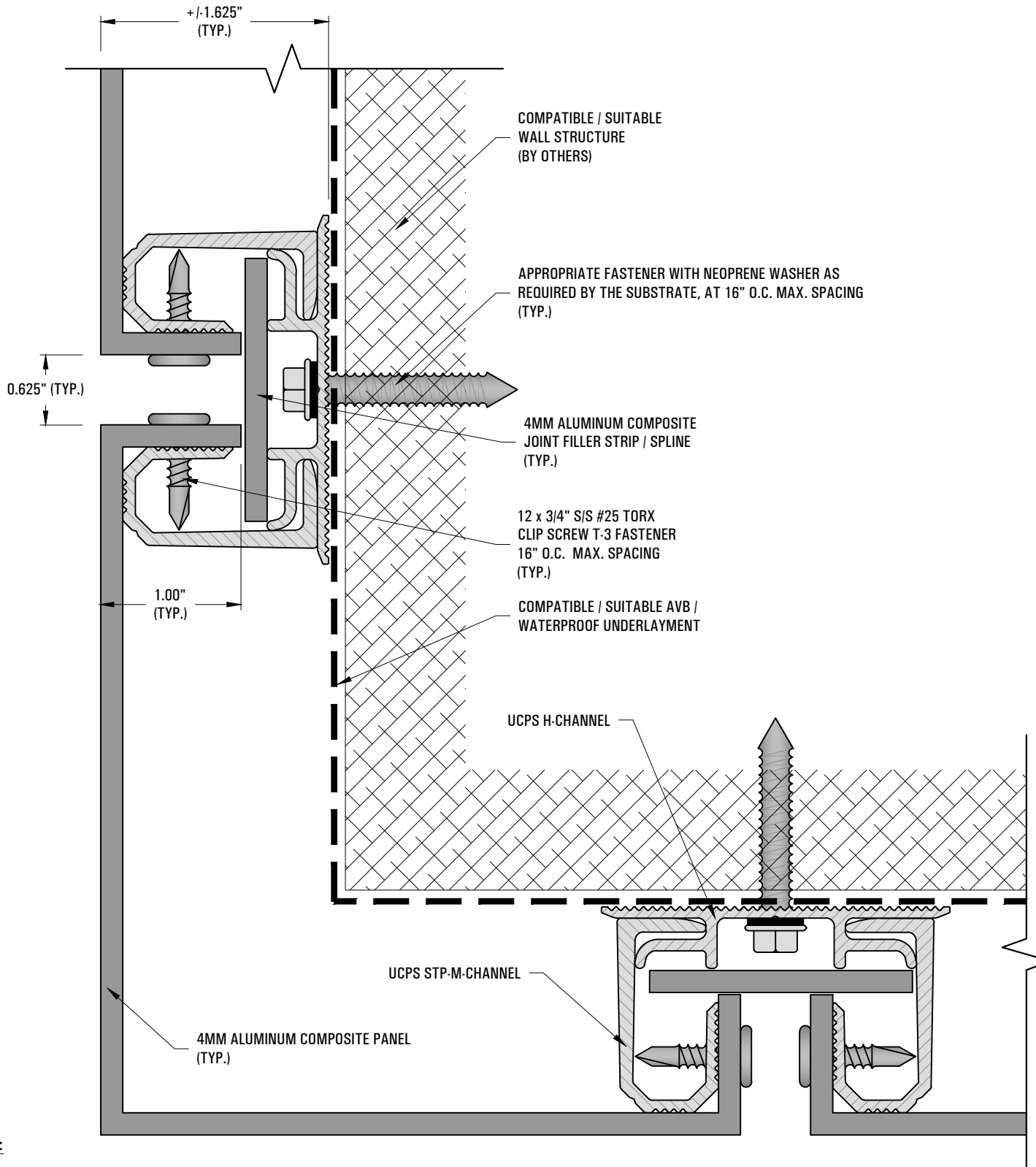
1. USE SHIMS (NOT SHOWN) AS REQUIRED SO THAT EACH PANEL LIES LEVEL AND PLUMB.

TYPICAL VERTICAL JOINT DETAIL



DRAWING REVISIONS		DRAWN BY:	RJH	DETAIL
REV. #	DESCRIPTION	CHECKED BY:		3
001	APPROVED FOR TRAINING 3/17/25	DATE:	3/17/25	
		SCALE:	N.T.S.	
		MATERIAL(S):	UCPS & ACM	

UCPS SERIES 1000 RAINSCREEN (RS)



NOTES:

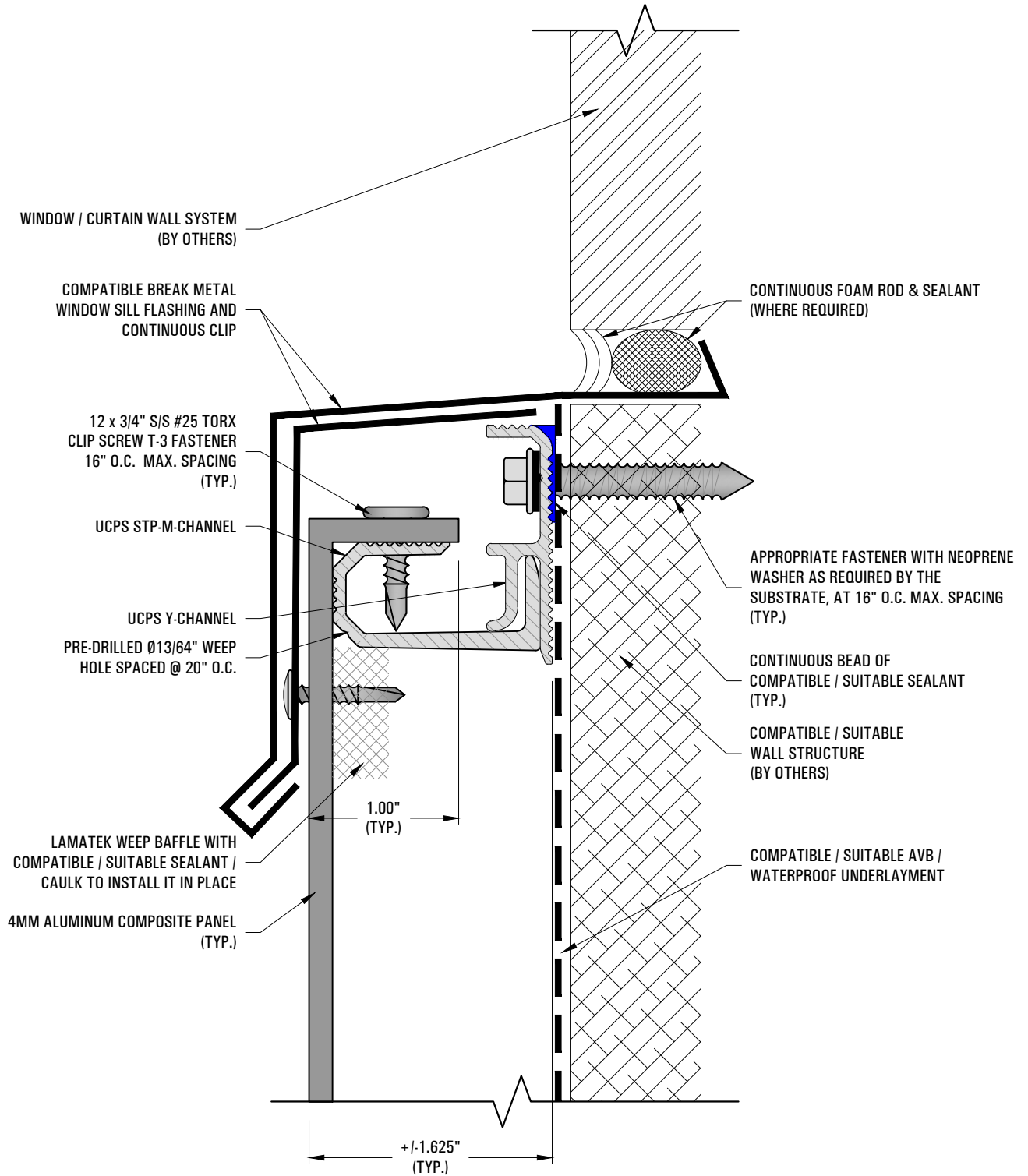
1. USE SHIMS (NOT SHOWN) AS REQUIRED SO THAT EACH PANEL LIES LEVEL AND PLUMB.

TYPICAL OUTSIDE CORNER DETAIL



DRAWING REVISIONS		DRAWN BY:	RJH	DETAIL
REV. #	DESCRIPTION	CHECKED BY:		
001	APPROVED FOR TRAINING 3/17/25	DATE:	3/17/25	
		SCALE:	N.T.S.	
		MATERIAL(S):	UCPS & ACM	
				4

UCPS SERIES 1000 RAINSCREEN (RS)



NOTES:

1. USE SHIMS (NOT SHOWN) AS REQUIRED SO THAT EACH PANEL LIES LEVEL AND PLUMB.

TYPICAL WINDOW SILL DETAIL

DRAWING REVISIONS

REV. #	DESCRIPTION
001	APPROVED FOR TRAINING 3/17/25

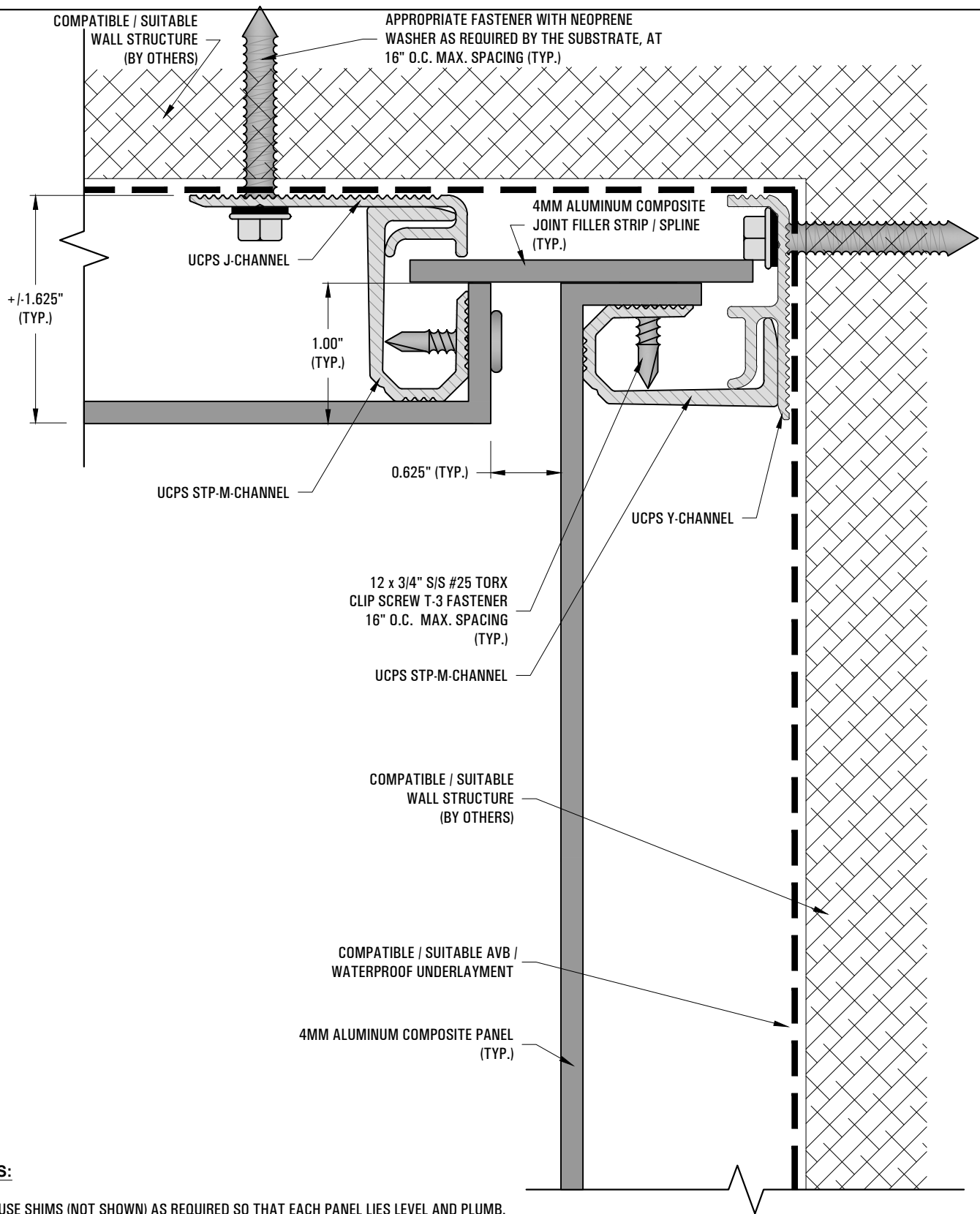
DRAWN BY:	RJH
CHECKED BY:	
DATE:	3/17/25
SCALE:	N.T.S.
MATERIAL(S):	UCPS & ACM

DETAIL

5



UCPS SERIES 1000 RAINSCREEN (RS)



NOTES:

1. USE SHIMS (NOT SHOWN) AS REQUIRED SO THAT EACH PANEL LIES LEVEL AND PLUMB.

TYPICAL INSIDE CORNER DETAIL

DRAWING REVISIONS

REV. #	DESCRIPTION
001	APPROVED FOR TRAINING 3/17/25

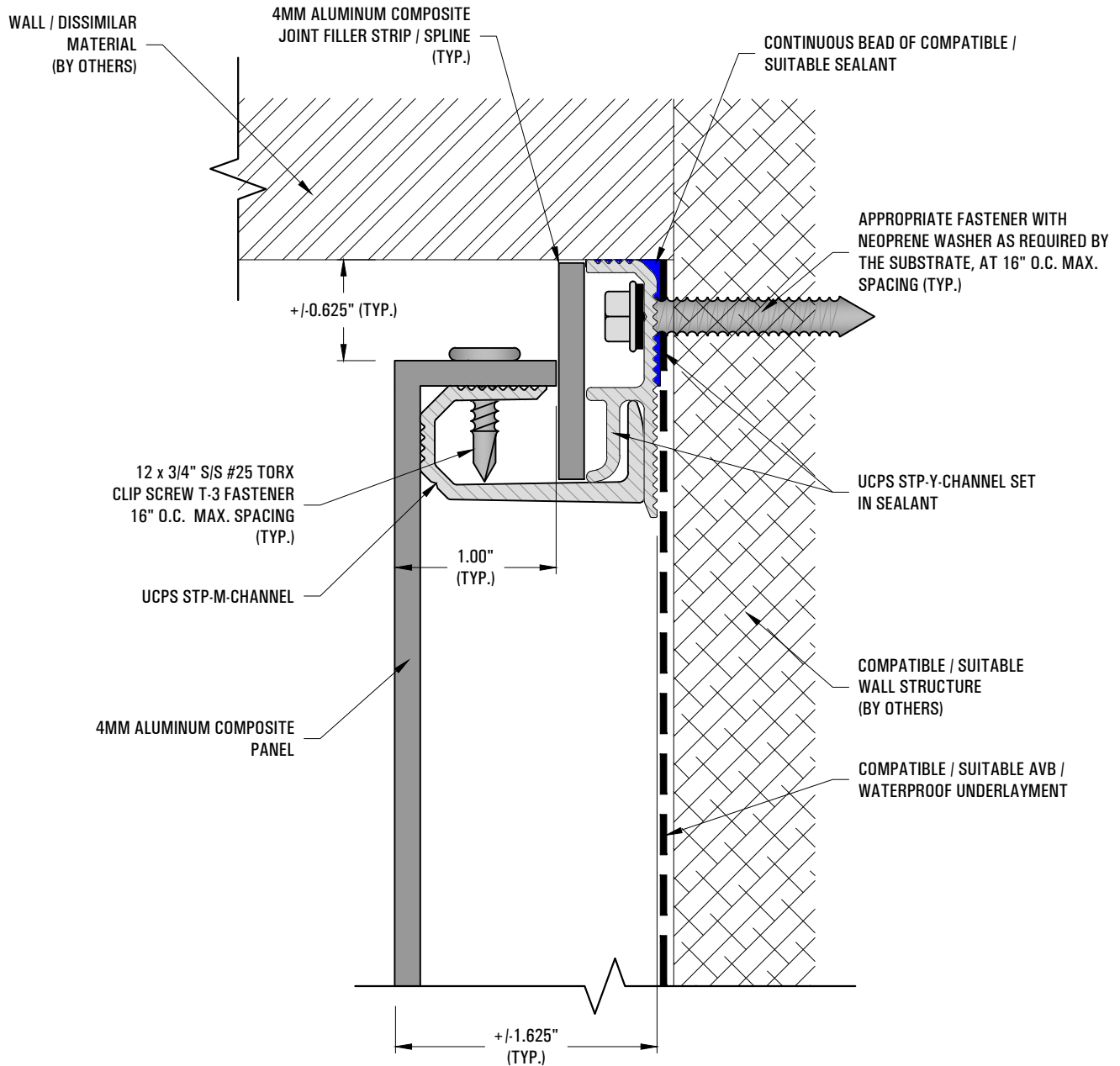
DRAWN BY:	RJH
CHECKED BY:	
DATE:	3/17/25
SCALE:	N.T.S.
MATERIAL(S):	UCPS & ACM

DETAIL

6



UCPS SERIES 1000 RAINSCREEN (RS)



NOTES:

1. USE SHIMS (NOT SHOWN) AS REQUIRED SO THAT EACH PANEL LIES LEVEL AND PLUMB.

TYP. PANEL TO WALL / DISSIMILAR MATERIAL DETAIL

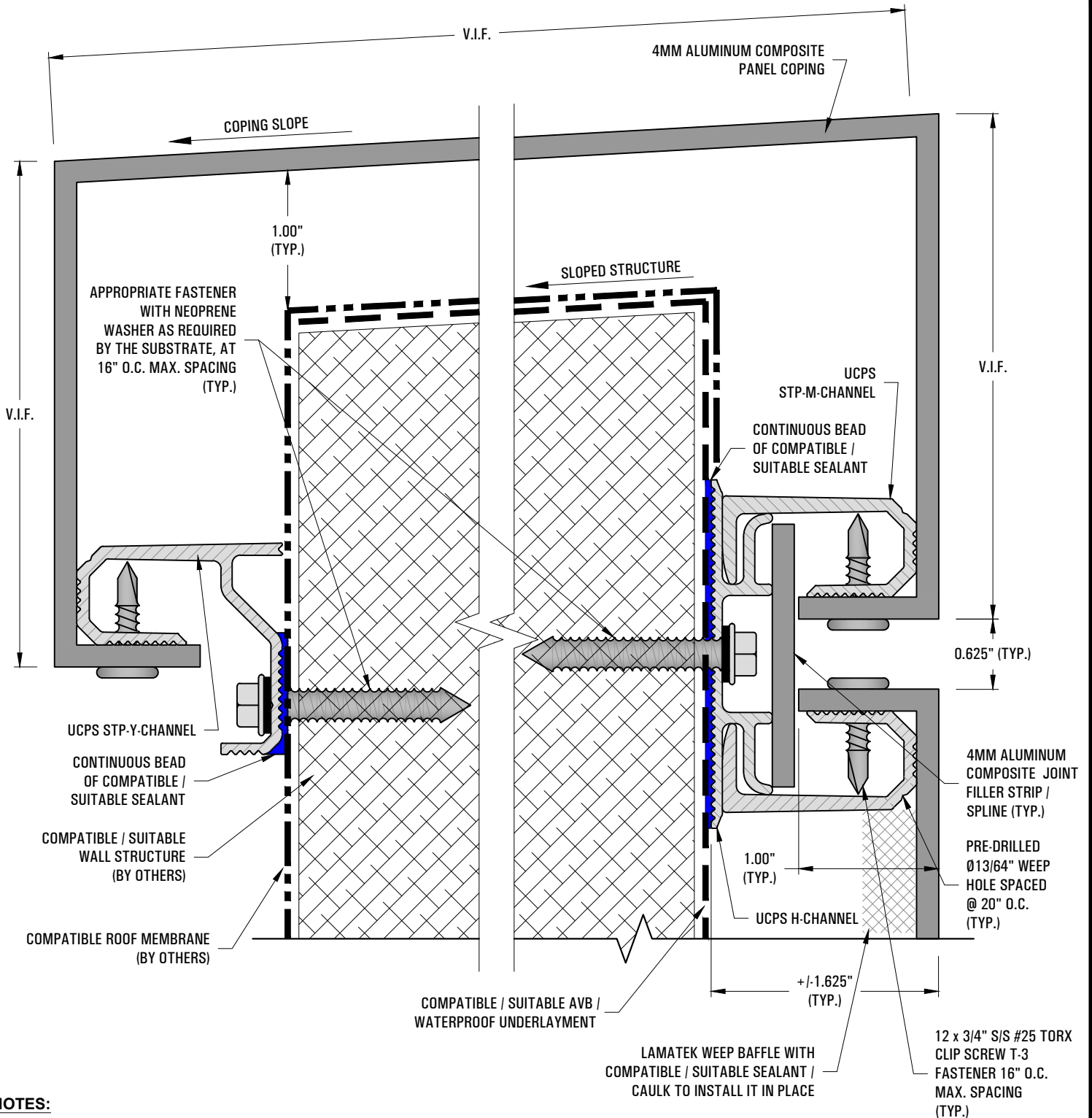


DRAWING REVISIONS	
REV. #	DESCRIPTION
001	APPROVED FOR TRAINING 3/17/25

DRAWN BY:	RJH
CHECKED BY:	
DATE:	3/17/25
SCALE:	N.T.S.
MATERIAL(S):	UCPS & ACM

DETAIL	7

UCPS SERIES 1000 RAINSCREEN (RS)



NOTES:

1. USE SHIMS (NOT SHOWN) AS REQUIRED SO THAT EACH PANEL LIES LEVEL AND PLUMB.

ACM COPING DETAIL

DRAWING REVISIONS

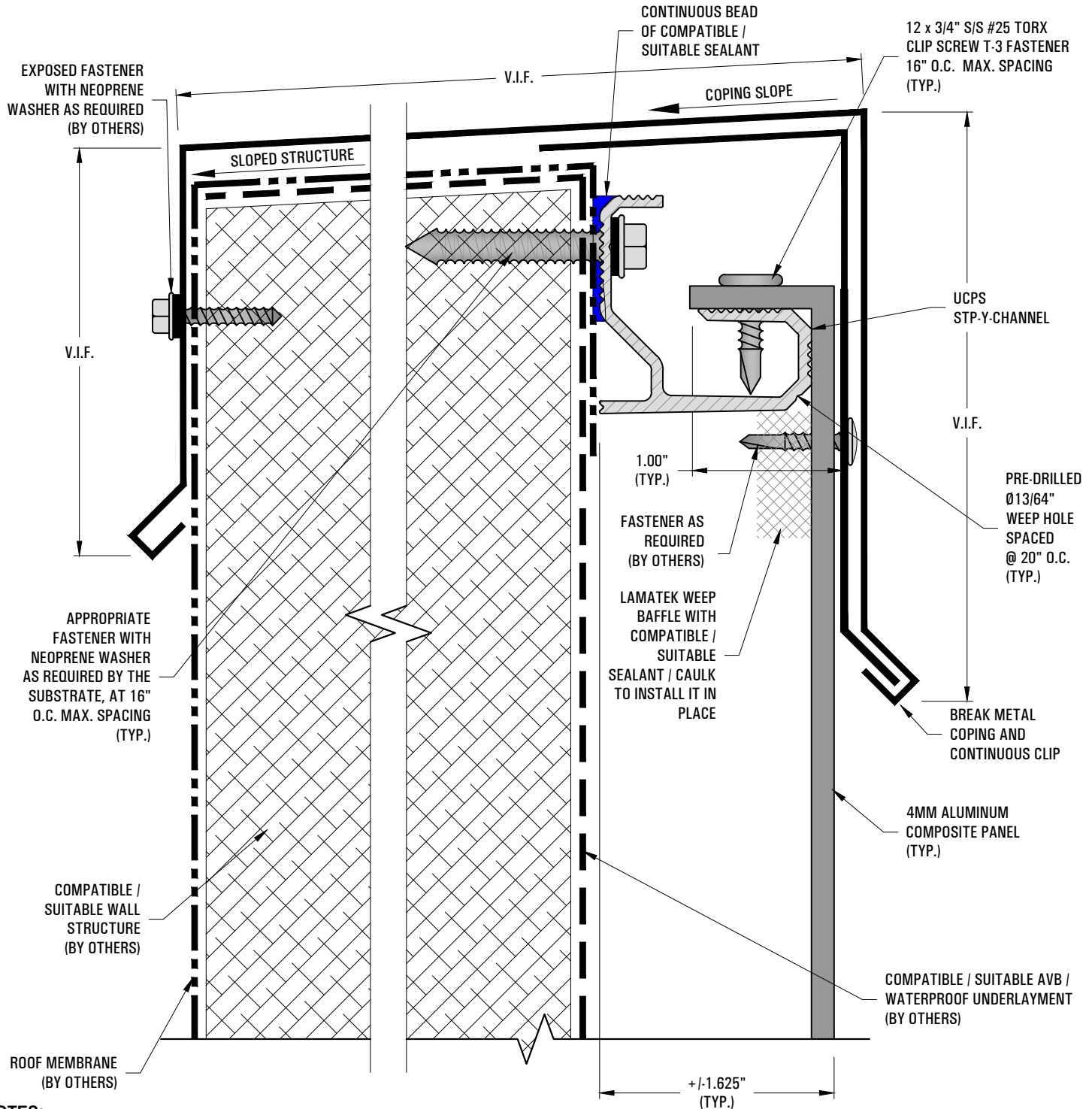
REV. #	DESCRIPTION
001	APPROVED FOR TRAINING 3/17/25

DRAWN BY:	RJH	DETAIL
CHECKED BY:		
DATE:	3/17/25	
SCALE:	N.T.S.	
MATERIAL(S):	UCPS & ACM	

8



UCPS SERIES 1000 RAINSCREEN (RS)



NOTES:

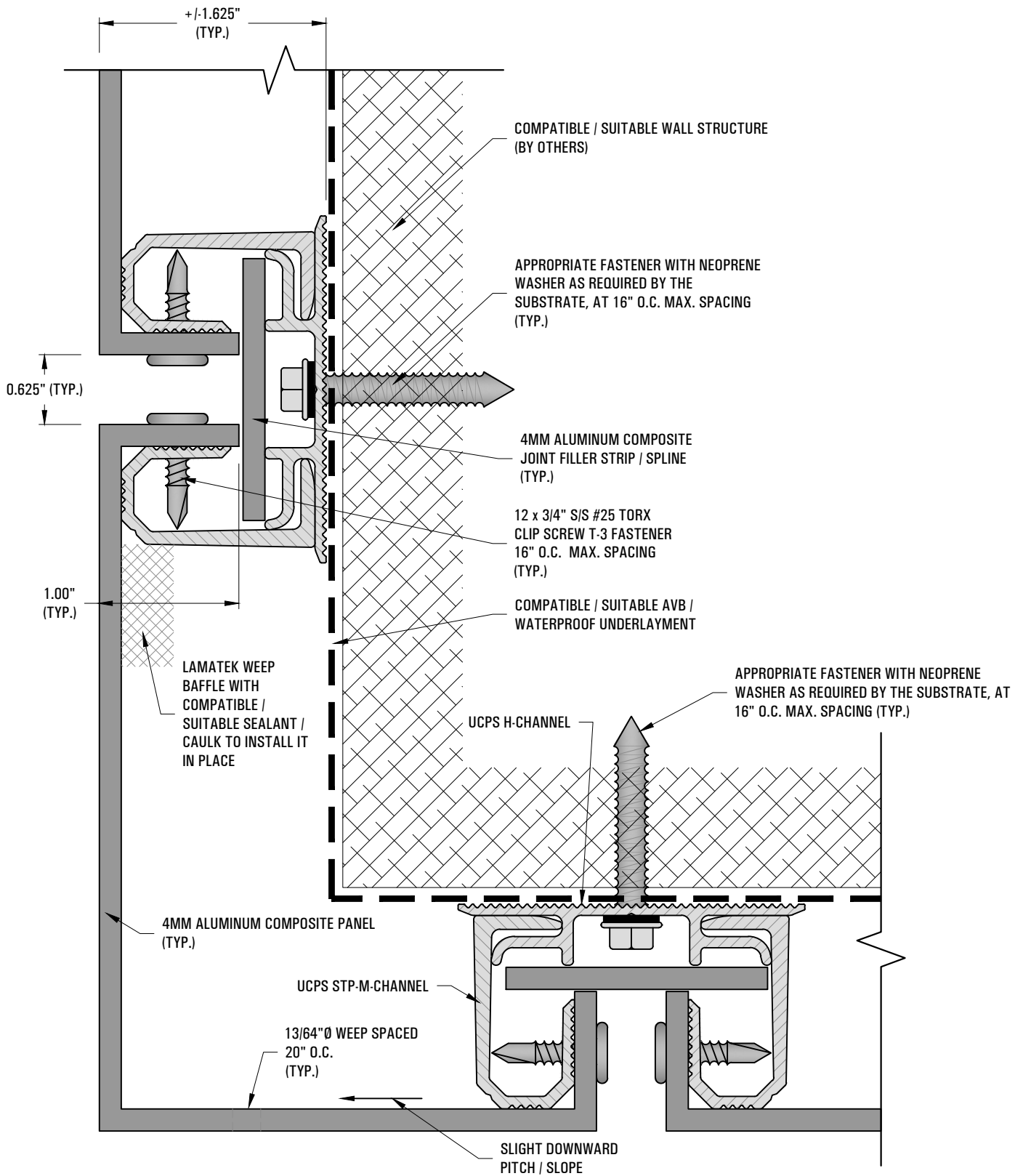
1. USE SHIMS (NOT SHOWN) AS REQUIRED SO THAT EACH PANEL LIES LEVEL AND PLUMB.

BREAK METAL COPING DETAIL



DRAWING REVISIONS		DRAWN BY:	RJH	DETAIL
REV. #	DESCRIPTION	CHECKED BY:		
REV1 1	APPROVED FOR TRAINING 3/17/25	DATE:	3/17/25	
		SCALE:	N.T.S.	
		MATERIAL(S):	UCPS & ACM	
				8A

UCPS SERIES 1000 RAINSCREEN (RS)



NOTES:

1. USE SHIMS (NOT SHOWN) AS REQUIRED SO THAT EACH PANEL LIES LEVEL AND PLUMB.

TYPICAL FASCIA / WALL TO SOFFIT DETAIL



DRAWING REVISIONS		DRAWN BY:	RJH	DETAIL
REV. #	DESCRIPTION	CHECKED BY:		9
001	APPROVED FOR TRAINING 3/17/25	DATE:	3/17/25	
		SCALE:	N.T.S.	
		MATERIAL(S):	UCPS & ACM	