



UNIVERSAL
COMPOSITE PANEL SYSTEMS™



Proudly Made
In The USA!

REVOLUTIONIZING THE COMPOSITE METAL PANEL INDUSTRY!

UCPS SERIES 1000

THE HYBRID RAIN SCREEN AND WET SEAL COMPOSITE METAL PANEL EXTRUSION ATTACHMENT SYSTEM THAT IS “THE SOLUTION TO CONTROL YOUR COSTS, AND YOUR SCHEDULE!”

As the industry leader, innovation and attention to detail is a priority! Therefore, all UCPS products have been custom and meticulously designed by industry leading professionals with over 100 years of combined commercial architectural sheet metal and metal wall panel experience. Thus creating the Universal Composite Panel System (UCPS) Series 1000, now known as the industry's highest rated and strongest composite metal panel extrusion and attachment system on the market, that is “the solution to control your costs and your schedule”.

The UCPS Series 1000 brings a unique set of features not yet seen in the industry previously, as it is a hybrid attachment system that can be installed as both wet seal and rainscreen composite metal panel system attachments and design. It's innovative design also uniquely incorporates a first-of-its-kind concealed drainage system. Additionally, installer safety was considered with a concealed fastener design, keeping the hands of the fabricators and installers safe from unseen fasteners.

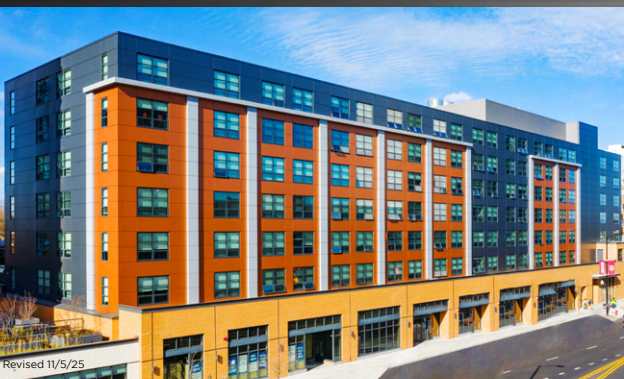
The UCPS Series 1000 is a favorite of fabricators, installers, architects, and owners alike, receiving the industry's best ratings by passing AAMA 508 and with AAMA 509 results of a V1 / W1 rating! UCPS Series 1000 is designed for user-friendly installation, with a concealed drainage system that has no effect on the beautiful and exceptional aesthetics of your composite metal panel system.

855.696.8277 | INFO@UCPS.US

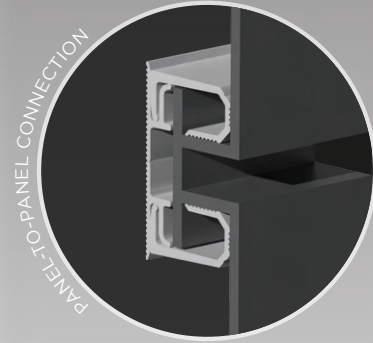
UNIQUE FEATURES AND BENEFITS

- Universal hybrid design for both rainscreen and wet seal installations and applications requiring no change in fabrication of your panels, or additional time to prepare either system.
- State-of-the-art internal weep / drainage system.
- The Universal hybrid design of the UCPS system means you only need to stock (4-6) profiles for both rainscreen and wet seal composite panel systems, providing the benefit of exceptionally low inventory to provide either system application.
- UCPS's internal weep system keeps unsightly holes out of your panel system design and aesthetics, maintaining a clean and stream lined look of ACM while providing the necessary drainage to complete your system assembly, further supporting your need to keep your investment dry and your aesthetics clean and beautiful.
- Awarded the industry's best ratings by passing AAMA 508 and with AAMA 509 results of a V1 / W1 rating!
- Strong tubular design that keeps fasteners and rivets encapsulated, protecting the hands of fabricators and installers alike.

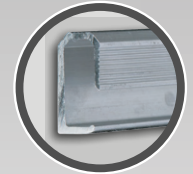
Revised 7/1/25



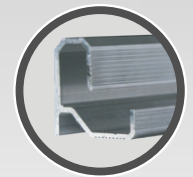
Revised 11/5/25



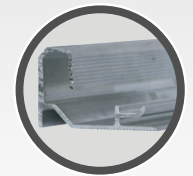
PANEL-TO-PANEL CONNECTION



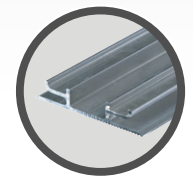
STP-M-CHANNEL



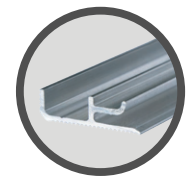
STP-Y-CHANNEL



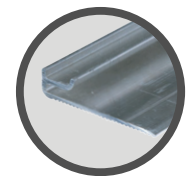
STP-F-CHANNEL



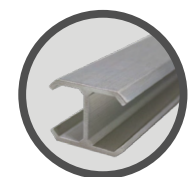
H-CHANNEL



Y-CHANNEL



J-CHANNEL



I-BEAM STIFFENER